



## PULLING GRIPS

### Pulling Grips

Pulling Grips offer excellent means of pulling electrical cable, bare conductors, copper telephone cable or rope through conduit. Grips are made of high-quality galvanized steel strand to assure long life. Under normal conditions, the grips should be used with a safety factor of five, but this will vary depending on the situation. The tension, diameter, movement, number of objects gripped, gripping surface and the attachments used are some of the variables affecting the safety factor. In addition, the effects of abrasion, corrosion, prior use or misuse must be considered and the grip replaced when necessary. The safety factor is ultimately determined by the user.

Fiber Optic Pulling Grips are also available. They feature a special weave that provides positive holding power while allowing the grip to remain flexible, ensuring cable protection.

Additional sizes & support grips are available, please contact Condux Customer Service for assistance.



## Select The Correct Grip

Each grip is designed to work on a specific range of cable diameters.

- Step 1:** Determine your cable outside diameter.
- Step 2:** Find the grip size that encompasses your cable diameter.
- Step 3:** Whenever possible, use a closed mesh that assembles over the cable end. If the cable end is not available, use a split mesh.
- Step 4:** Where available, select an eye style that suits your needs.
- Step 5:** Estimate the tension to be put on the grip, establish the working load you require and compare this to the listed approximate breaking strength of the grip to ensure that the grip will be strong enough.

**!** **ORDER CAREFULLY**  
These items are made-to-order and are not returnable.



## Calculating grip size for multiple cables of same diameter

	Number of Cables In Bundle in (mm)							Grip Diameter Range in (mm)
	2	3	4	5	6 & 7	8	9	
Individual Cable Diameter Range	.30-.38 (8-10)	.25-.31 (6-8)	.22-.27 (6-7)	.19-.24 (5-6)	.17-.22 (4-6)	.15-.19 (4-5)	.14-.18 (3-4)	.50-.61 (13-15)
	.38-.44 (10-11)	.31-.36 (8-9)	.27-.31 (7-8)	.24-.29 (6-7)	.22-.26 (6-7)	.19-.23 (5-6)	.18-.21 (4-5)	.62-.74 (16-19)
	.44-.59 (11-15)	.36-.49 (9-12)	.31-.42 (8-11)	.29-.38 (7-10)	.26-.34 (7-9)	.23-.31 (6-8)	.21-.28 (5-7)	.75-.99 (19-25)
	.59-.75 (15-19)	.49-.63 (12-16)	.42-.54 (11-14)	.38-.48 (10-12)	.34-.43 (9-11)	.31-.39 (8-10)	.28-.35 (7-9)	1.00-1.24 (25-31)
	.75-.90 (19-23)	.63-.76 (16-19)	.54-.65 (14-17)	.48-.58 (12-15)	.43-.52 (11-13)	.39-.46 (10-12)	.35-.42 (9-11)	1.25-1.49 (31-38)
	.90-1.07 (23-27)	.76-.89 (19-23)	.65-.77 (17-19)	.58-.67 (15-17)	.52-.60 (13-15)	.46-.54 (12-14)	.42-.49 (11-12)	1.50-1.74 (38-44)
	1.07-1.22 (27-31)	.89-1.02 (23-26)	.77-.88 (19-20)	.67-.77 (17-19)	.60-.69 (15-18)	.54-.62 (14-16)	.49-.56 (12-14)	1.75-1.99 (44-51)
	1.22-1.53 (31-39)	1.02-1.28 (26-33)	.88-1.10 (20-28)	.77-.96 (19-24)	.69-.86 (18-22)	.62-.77 (16-19)	.56-.71 (14-18)	2.00-2.49 (51-63)
	1.53-1.83 (39-46)	1.28-1.53 (33-39)	1.10-1.32 (28-34)	.96-1.16 (24-29)	.86-1.03 (22-26)	.77-.93 (19-24)	.71-.85 (18-22)	2.50-2.99 (63-76)
	1.83-2.14 (46-54)	1.53-1.79 (39-45)	1.32-1.54 (34-39)	1.16-1.35 (29-34)	1.03-1.20 (26-30)	.93-1.08 (24-27)	.85-.99 (22-25)	3.00-3.49 (76-89)
	2.14-2.44 (54-62)	1.79-2.05 (45-52)	1.54-1.76 (39-45)	1.35-1.54 (34-39)	1.20-1.37 (30-35)	1.08-1.24 (27-31)	.99-1.13 (25-29)	3.50-3.99 (89-101)
	2.44-2.75 (62-70)	2.05-2.30 (52-58)	1.76-1.98 (45-50)	1.54-1.74 (39-44)	1.37-1.55 (35-39)	1.24-1.39 (31-35)	1.13-1.27 (29-32)	4.00-4.49 (101-114)
2.75-3.06 (70-78)	2.30-2.56 (58-65)	1.98-2.20 (50-56)	1.74-1.93 (44-49)	1.55-1.72 (39-44)	1.39-1.55 (35-39)	1.27-1.41 (32-36)	4.50-4.99 (114-127)	

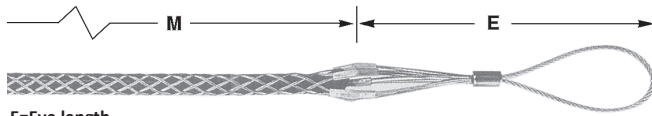




# FIBER OPTIC PULLING GRIPS

**ORDER CAREFULLY**  
These items are made-to-order and are not returnable.

## Fiber Optic Grip - Flexible Eye, Low Profile, Double/Single Weave Mesh



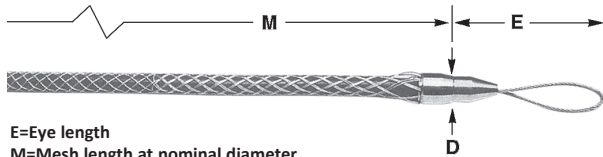
Double/Single weave mesh, galvanized steel for outside plant cable. Used for the installation of fiber optic communication lines either underground, overhead, through conduit or through enclosures. They will fit single cables or cable bundles, are easily installed on the cable and are reusable.

E=Eye length

M=Mesh length at nominal diameter.

Part Number	Description	Cable Diameter Range		Approximate Breaking Strength		E		M	
		(in)	(mm)	(lbs)	(N)	(in)	(mm)	(in)	(mm)
08643753	033-29-1193	.10-.22	3-6	900	4,003	7½	190	10	254
08643754	033-29-1194	.21-.35	5-9	1,400	6,227	7½	190	14	356
08643755	033-29-1195	.32-.48	8-12	2,000	8,896	8½	216	19	483
08643756	033-29-1196	.42-.61	11-15	2,500	11,120	8½	216	21	533
08643757	033-29-1197	.53-.74	13-19	3,000	13,344	8½	216	23	584
08643758	033-29-1198	.64-.87	16-22	4,200	18,682	8½	216	25	635
08643759	033-29-1199	.75-1.00	19-25	4,200	18,682	8½	216	28	711

## Fiber Optic Grip - Flexible Eye



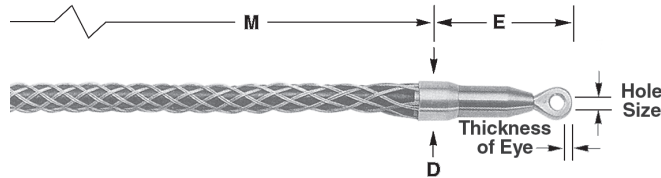
Double/Single weave mesh, galvanized steel for outside plant cable. Used for the installation of fiber optic communication lines either underground, overhead, through conduit or through enclosures. They will fit single cables or cable bundles, are easily installed on the cable and are reusable.

E=Eye length

M=Mesh length at nominal diameter.

Part Number	Description	Cable Diameter Range		Approximate Breaking Strength		E		M		D	
		(in)	(mm)	(lbs)	(N)	(in)	(mm)	(in)	(mm)	(in)	(mm)
08643505	033-29-1000	.10-.22	3-6	1,000	4,448	5½	140	9	229	.8	20
08643512	033-29-1001	.21-.35	5-9	1,500	6,672	5½	140	14	356	.8	20
08643514	033-29-1002	.32-.48	8-12	2,200	9,786	6	152	18	457	.9	23
08643518	033-29-1003	.42-.61	11-15	2,800	12,454	6	152	21	533	.9	23
08643524	033-29-1004	.53-.74	13-19	3,300	14,678	6½	165	24	610	1.3	33
08643529	033-29-1005	.64-.87	16-22	4,700	20,906	6½	165	27	686	1.3	33

## Fiber Optic Grip - Swivel Eye



Double/Single weave mesh, galvanized steel for outside plant cable. Used for the installation of fiber optic communication lines either underground, overhead, through conduit or through enclosures. They will fit single cables or cable bundles, are easily installed on the cable and are reusable.

Part Number	Description	Cable Diameter Range		Approximate Breaking Strength		E		M		D		Hole Size		Thickness of Eye	
		(in)	(mm)	(lbs)	(N)	(in)	(mm)	(in)	(mm)	(in)	(mm)	(in)	(mm)	(in)	(mm)
08643612	033-29-1008	.21-.35	5-9	1,500	6,672	4	102	14	356	.9	23	.24	6	.5	13
08643614	033-29-1009	.32-.48	8-12	2,200	9,786	4	102	18	457	.9	23	.24	6	.5	13
08643618	033-29-1010	.42-.61	11-15	2,800	12,455	4	102	21	533	.9	23	.24	6	.5	13
08643624	033-29-1011	.53-.74	13-19	3,250	14,457	4.8	122	24	610	1.3	33	.24	6	.5	13
08643629	033-29-1012	.64-.87	16-22	4,700	20,907	4.8	122	27	686	1.3	33	.24	6	.5	13

## Fiber Optic Slack Grip - Split Mesh, Rod Closing, Single Weave



Single weave mesh, galvanized steel for outside plant cable. Used for the installation of fiber optic communication lines either underground, overhead, through conduit or through enclosures. They will fit single cables or cable bundles, are easily installed on the cable and are reusable.

E=Eye length

M=Mesh length at nominal diameter.

Part Number	Description	Cable Diameter Range		Approximate Breaking Strength		E		M	
		(in)	(mm)	(lbs)	(N)	(in)	(mm)	(in)	(mm)
08643713	033-29-1015	.25-.37	6-9	300	1,334	3	76	4.7	119
08643716	033-29-1016	.38-.49	10-12	800	3,559	3	76	5	127
08643722	033-29-1017	.50-.61	13-15	800	3,559	3	76	7½	191
08643728	033-29-1018	.62-.74	16-19	1,200	5,338	3	76	8	203

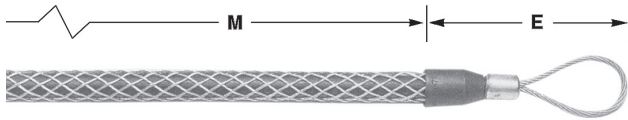


**CONDEX**

# PULLING GRIPS



## Junior Grip



E=Eye length  
M=Mesh length at nominal diameter.

Junior Pulling Grips feature a strong galvanized steel, single weave mesh. A flexible eye easily attaches to a pulling line, snake or fish tape. Designed to pull building wire, Junior grips are safe tools to use in pulling wire at low tension through conduit during electrical construction.

Part Number	Description	Cable Diameter Range		Approximate Breaking Strength		E		M	
		(in)	(mm)	(lbs)	(N)	(in)	(mm)	(in)	(mm)
08643210	033-05-011	.19-.24	5-6	400	1,779	3 3/4	83	4 1/4	108
08643213*	033-05-001	.25-.37	6-9	450	2,002	3 3/4	83	4 1/4	108
08643216*	033-05-002	.38-.49	10-12	900	4,003	3 3/4	95	7	178
08643222*	033-05-003	.50-.62	13-16	1,300	5,783	4 1/4	108	8 1/2	216
08643228*	033-05-004	.63-.74	16-19	1,950	8,674	5	127	10	254
08643231*	033-05-005	.75-.99	19-25	2,800	12,455	5 3/4	146	10	254
08643237*	033-05-006	1.00-1.24	25-31	3,900	17,348	6 1/2	165	11 1/2	292

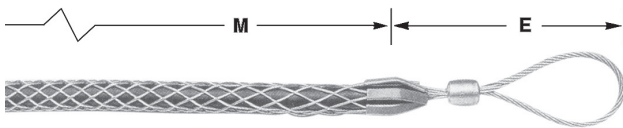
## Junior Grip Kit

Contains items indicated with (\*) in Junior Grip chart above.

Part Number 08643200



## Light Duty Grip - Short

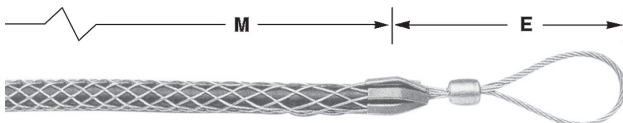


E=Eye length  
M=Mesh length at nominal diameter.

Light Duty Pulling Grips are made of galvanized steel in a single weave construction. They feature a flexible eye for easy attachment to a pulling line. Light duty grips are used in general underground electrical construction where pulling tensions are low. They are easy tools to use in wiring industrial plants and commercial buildings.

Part Number	Description	Cable Diameter Range		Approximate Breaking Strength		E		M	
		(in)	(mm)	(lbs)	(N)	(in)	(mm)	(in)	(mm)
08643022	033-03-001	.50-.62	13-16	2,800	12,455	5	127	11	279
08643028	033-03-002	.63-.74	16-19	2,800	12,455	5	127	11	279
08643031	033-03-003	.75-.99	19-25	4,000	17,792	6	152	12	305
08643037	033-03-004	1.00-1.24	25-31	5,300	23,576	7	178	13	330
08643043	033-03-005	1.25-1.49	32-38	5,300	23,576	7	178	14	356
08643049	033-03-006	1.50-1.74	38-44	6,800	30,248	8	203	15	381
08643052	033-03-007	1.75-1.99	44-51	8,500	37,810	9	229	17	432
08643055	033-03-008	2.00-2.49	51-63	8,500	37,810	9	229	18	457

## Light Duty Grip - Standard



Light Duty Pulling Grips are made of galvanized steel in a single weave construction. They feature a flexible eye for easy attachment to a pulling line. Light duty grips are used in general underground electrical construction where pulling tensions are low. They are easy tools to use in wiring industrial plants and commercial buildings.

Part Number	Description	Range		Approximate Breaking Strength		E		M	
		(in)	(mm)	(lbs)	(N)	(in)	(mm)	(in)	(mm)
08643122	033-03-010	.50-.62	13-16	2,800	12,455	5	127	16	406
08643128	033-03-011	.63-.74	16-19	2,800	12,455	5	127	16	406
08643131	033-03-012	.75-.99	19-25	4,000	17,792	6	152	20	508
08643137	033-03-013	1.00-1.24	25-31	6,800	30,248	7	178	20	508
08643143	033-03-015	1.25-1.49	32-38	6,800	30,248	7	178	21	533
08643149	033-03-016	1.50-1.99	38-51	6,800	30,248	8	203	23	584
08643155	033-03-017	2.00-2.49	51-63	8,500	37,810	9	229	25	635
08643158	033-03-018	2.50-2.99	64-76	10,600	47,151	9	229	27	686
08643161	033-03-019	3.00-3.49	76-89	14,700	65,389	10	254	30	762
08643164	033-03-029	3.50-3.99	89-101	14,700	65,389	10	254	32	813

PULLING EYES & ACCESSORIES



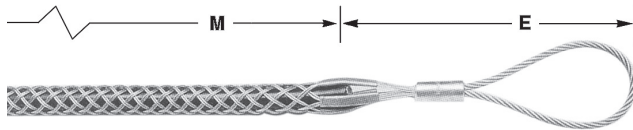




# PULLING GRIPS

**ORDER CAREFULLY**  
These items are made-to-order and are not returnable.

## T-Type Grips - Short, Flexible Eye



E=Eye length  
M=Mesh length at nominal diameter.

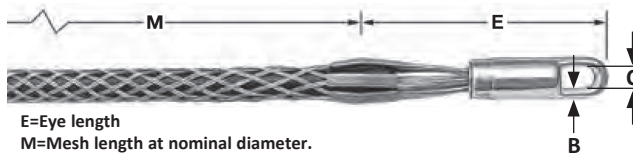
Flexible T-Type Pulling Grips are made of high strength galvanized steel strand. They feature double weave mesh for positive holding power in medium to heavy pulling jobs. The grip eye will easily attach to a swivel. They are used for the installation of underground power cables, communication lines and service lines into factories, construction projects and for general underground electrical construction. Available in two mesh lengths, short for medium pulls, and standard for general purpose pulling.

Part Number	Description	Cable Diameter Range		Approximate Breaking Strength		E		M	
		(in)	(mm)	(lbs)	(N)	(in)	(mm)	(in)	(mm)
08642222	033-04-1082	.50-.62	13-16	4,500	20,017	8	203	21	533
08642228	033-04-1083	.63-.74	16-19	5,600	24,910	8	203	24	610
08642231	033-04-1084	.75-.99	19-25	6,800	30,248	9	229	24	610
08642237	033-04-1085	1.00-1.49	25-38	9,600	42,703	9	229	24	610
08642249	033-04-1086	1.50-1.99	38-51	16,400	72,951	11	279	24	610
08642255	033-04-1087	2.00-2.49	51-63	18,500	82,292	12	305	24	610
08642258	033-04-1088	2.50-2.99	64-76	24,500	108,981	12	305	24	610
08642261	033-04-1089	3.00-3.49	76-89	24,500	108,981	14	356	24	610
08642264	033-04-1090	3.50-3.99	89-101	31,000	137,895	14	356	26	660

## T-Type Grips - Standard, Flexible Eye

Part Number	Description	Cable Diameter Range		Approximate Breaking Strength		E		M	
		(in)	(mm)	(lbs)	(N)	(in)	(mm)	(in)	(mm)
08642331	033-04-1091	.75-.99	19-25	6,800	30,248	9	229	36	914
08642337	033-04-1092	1.00-1.49	25-38	9,600	42,703	9	229	36	914
08642349	033-04-1093	1.50-1.99	38-51	16,400	72,951	11	279	36	914
08642355	033-04-1094	2.00-2.49	51-63	18,500	82,292	12	305	36	914
08642358	033-04-1095	2.50-2.99	64-76	24,500	108,981	12	305	36	914
08642361	033-04-1096	3.00-3.49	76-89	24,500	108,981	14	356	36	914
08642364	033-04-1097	3.50-3.99	89-101	31,000	137,895	14	356	40	1,016

## K-Type Grips\* - Short, Forged Eye



E=Eye length  
M=Mesh length at nominal diameter.

Rotating Eye, K-Type Pulling Grips are made of high strength galvanized steel strand. All grips feature double weave mesh for greater strength and added mesh contact on the cable, to handle longer or heavier pulling jobs. The forged eye mates easily with a swivel or shackle. They are specially designed for use in the installation of underground power cables, communication lines and service lines into factories, shopping centers, construction projects and general underground electrical construction.

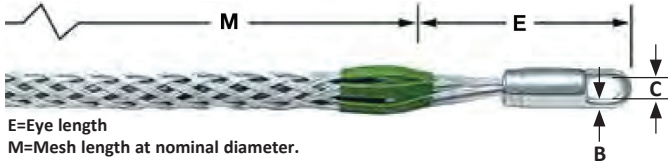
Part Number	Description	Cable Diameter Range		Approximate Breaking Strength		E		M		B		C	
		(in)	(mm)	(lbs)	(N)	(in)	(mm)	(in)	(mm)	(in)	(mm)	(in)	(mm)
08642022	033-01-001	.50-.62	13-16	5,600	24,910	5	127	11	279	9/32	7	1/2	13
08642028	033-01-002	.63-.74	16-19	6,800	30,248	5	127	11	279	9/32	7	1/2	13
08642031	033-01-013	.75-.99	19-25	6,800	30,248	6	152	20	508	1/2	13	9/16	14
08642037	033-01-014	1.00-1.24	25-31	12,800	56,937	7	178	20	508	1/2	13	11/16	17
08642043	033-01-016	1.25-1.49	32-38	12,800	56,937	7	178	21	533	1/2	13	11/16	17
08642049	033-01-017	1.50-1.99	38-51	16,400	72,951	7	178	25	635	1/2	13	11/16	17
08642055	033-01-018	2.00-2.49	51-63	27,200	120,992	8	203	26	660	5/8	16	7/8	22
08642058	033-01-019	2.50-2.99	64-76	33,000	146,791	10	254	28	711	21/32	17	1	25
08642061	033-01-020	3.00-3.49	76-89	41,000	182,377	10	254	30	762	21/32	17	1	25
08642064	033-01-021	3.50-3.99	89-101	48,000	213,515	10	254	32	813	21/32	17	1	25
08642067	033-01-1017	4.00-4.49	102-114	48,000	213,515	10	254	33	838	21/32	17	1	25

## K-Type Grips\* - Standard, Forged Eye

Part Number	Description	Cable Diameter Range		Approximate Breaking Strength		E		M		B		C	
		(in)	(mm)	(lbs)	(N)	(in)	(mm)	(in)	(mm)	(in)	(mm)	(in)	(mm)
08642122	033-01-011	.50-.62	13-16	5,600	24,910	5	127	16	406	9/32	7	1/2	13
08642128	033-01-012	.63-.74	16-19	6,800	30,248	5	127	16	406	9/32	7	1/2	13
08642131	033-01-024	.75-.99	19-25	9,600	42,703	6	152	32	813	1/2	13	9/16	14
08642137	033-01-025	1.00-1.49	25-38	16,400	72,951	7	178	33	838	1/2	13	11/16	17
08642149	033-01-026	1.50-1.99	38-51	16,400	72,951	7	178	34	864	1/2	13	11/16	17
08642155	033-01-027	2.00-2.49	51-63	27,200	120,992	9	229	36	914	5/8	16	7/8	22
08642158	033-01-028	2.50-2.99	64-76	33,000	146,791	10	254	38	965	21/32	17	1	25
08642161	033-01-029	3.00-3.49	76-89	41,000	182,377	10	254	39	991	21/32	17	1	25
08642164	033-01-030	3.50-3.99	89-101	48,000	213,515	10	254	41	1,041	21/32	17	1	25
08642167	033-01-031	4.00-4.49	102-114	48,000	213,515	10	254	42	1,067	21/32	17	1	25
08642170	033-01-039	4.50-4.99	114-127	48,000	213,515	10	254	58	1,473	21/32	17	1	25
08642173	033-01-047	5.00-5.99	127-152	48,000	213,515	10	254	60	1,524	21/32	17	1	25
08642176	033-01-045	6.00-6.99	152-178	48,000	213,515	10	254	66	1,676	21/32	17	1	25



## Multiple Strength Grip - Rotating Eye\*



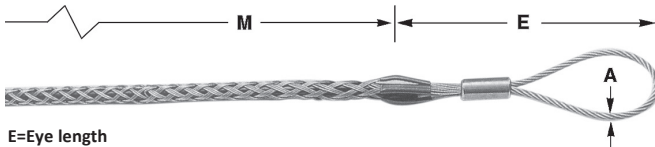
E=Eye length  
M=Mesh length at nominal diameter.

Multiple Strength Pulling Grips are designed for pulling ACSR, aluminum or copper bare conductor, ground wires, messenger strands, wire rope and insulated cables. They are ideal for overhead transmission and distribution line stringing where moderate loading is anticipated. They are economical tools used for attaching conductors to pulling lines and double socking for conductor-to-conductor connections.

Part Number	Description	Color	Cable Diameter Range		Approximate Breaking Strength		E		M		B		C	
			(in)	(mm)	(lbs)	(N)	(in)	(mm)	(in)	(mm)	(in)	(mm)	(in)	(mm)
08641813	033-02-016	Dark Green	.25-.49	6-12	6,800	30,248	5	127	26	660	<sup>9</sup> / <sub>32</sub>	7	<sup>1</sup> / <sub>2</sub>	13
08641822	033-02-018	Brown	.50-.74	13-19	10,000	44,482	6	152	32	813	<sup>1</sup> / <sub>2</sub>	13	<sup>9</sup> / <sub>16</sub>	14
08641831	033-02-020	Light Blue	.75-.99	19-25	14,400	64,054	6	152	41	1,041	<sup>1</sup> / <sub>2</sub>	13	<sup>9</sup> / <sub>16</sub>	14
08641837	033-02-022	Gold	1.00-1.24	25-31	24,600	109,426	8	203	52	1,321	<sup>1</sup> / <sub>2</sub>	13	<sup>11</sup> / <sub>16</sub>	17
08641843	033-02-024	Black	1.25-1.49	32-38	30,600	136,116	8	203	56	1,422	<sup>5</sup> / <sub>8</sub>	16	<sup>7</sup> / <sub>8</sub>	22
08641849	033-02-026	Red	1.50-1.74	38-44	30,600	136,116	9	229	60	1,524	<sup>21</sup> / <sub>32</sub>	17	1	25
08641852	033-02-028	Dark Blue	1.75-2.24	44-57	48,000	213,515	10	254	70	1,778	<sup>21</sup> / <sub>32</sub>	17	1	25
08641855	033-02-066	Yellow	2.00-2.49	51-63	48,000	213,515	10	254	50	1,270	<sup>21</sup> / <sub>32</sub>	17	1	25
08641858	033-02-097	Orange	2.50-2.99	64-76	48,000	213,515	10	254	52	1,321	<sup>21</sup> / <sub>32</sub>	17	1	25
08641861	033-02-1030	Aluminum	3.00-3.49	76-89	48,000	213,515	10	254	50	1,270	<sup>21</sup> / <sub>32</sub>	17	1	25
08641864	033-02-1031	Light Green	3.50-3.99	89-101	48,000	213,515	10	254	53	1,346	<sup>21</sup> / <sub>32</sub>	17	1	25

\*Rotating Eye is not a swivel. It will not turn while under tension, but it can turn to relieve pulling torque when the tension is relaxed.

## Multiple Strength Grip - Flexible Eye



E=Eye length  
M=Mesh length at nominal diameter.

Multiple Strength Pulling Grips are designed for pulling ACSR, aluminum or copper bare conductor, ground wires, messenger strands, wire rope and insulated cables. They are ideal for overhead transmission and distribution line stringing where moderate loading is anticipated. They are economical tools used for attaching conductors to pulling lines and double socking for conductor-to-conductor connections.

Part Number	Description	Color	Cable Diameter Range		Approximate Breaking Strength		E		M		Cable Dia. A	
			(in)	(mm)	(lbs)	(N)	(in)	(mm)	(in)	(mm)	(in)	(mm)
08641913	033-02-044	Dark Green	.25-.49	6-12	6,800	30,248	9	229	26	660	<sup>1</sup> / <sub>4</sub>	6
08641922	033-02-046	Brown	.50-.74	13-19	10,000	44,482	9	229	32	813	<sup>5</sup> / <sub>16</sub>	8
08641931	033-02-048	Light Blue	.75-.99	19-25	14,400	64,054	11	279	41	1,041	<sup>3</sup> / <sub>8</sub>	10
08641937	033-02-050	Gold	1.00-1.24	25-31	24,600	109,426	12	305	52	1,321	<sup>1</sup> / <sub>2</sub>	13
08641943	033-02-052	Black	1.25-1.49	32-38	30,600	136,116	12	305	56	1,422	<sup>1</sup> / <sub>2</sub>	13
08641949	033-02-054	Red	1.50-1.74	38-44	30,600	136,116	12	305	60	1,524	<sup>1</sup> / <sub>2</sub>	13
08641952	033-02-056	Dark Blue	1.75-2.24	44-57	48,000	213,515	18	457	70	1,778	<sup>5</sup> / <sub>8</sub>	16
08641955	033-02-1078	Yellow	2.00-2.49	51-63	48,000	213,515	18	457	50	1,270	<sup>5</sup> / <sub>8</sub>	16
08641958	033-02-1079	Orange	2.50-2.99	64-76	48,000	213,515	18	457	52	1,321	<sup>5</sup> / <sub>8</sub>	16
08641961	033-02-1080	Aluminum	3.00-3.49	76-89	48,000	213,515	18	457	50	1,270	<sup>5</sup> / <sub>8</sub>	16
08641964	033-02-1081	Light Green	3.50-3.99	89-101	48,000	213,515	18	457	53	1,346	<sup>5</sup> / <sub>8</sub>	16

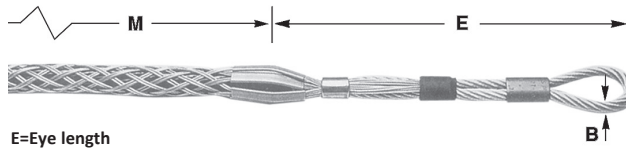




# PULLING GRIPS

**ORDER CAREFULLY**  
These items are made-to-order and are not returnable.

## Dua-Pull® Grips\*\*



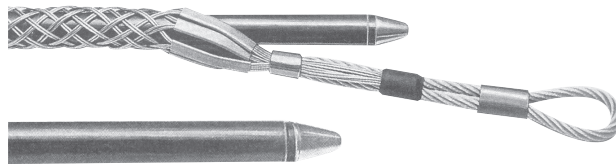
E=Eye length  
M=Mesh length at nominal diameter.

Dua-Pull Pulling Grips are the highest strength pulling grips manufactured for overhead transmission line stringing applications. They are most commonly used for attaching pulling lines to conductors, conductors to running boards and double socking for conductor-to-conductor connections. They accommodate ACSR, ACAR, all aluminum and copper conductors, ground wires messenger strands and synthetic ropes not provided by any other grip.

Part Number	Description	Color	Conductor Dia. Range		Rope Dia. Range*		Approx. Breaking Strength		E		M		B	
			(in)	(mm)	(in)	(mm)	(lbs)	(N)	(in)	(mm)	(in)	(mm)	(in)	(mm)
08641710	033-27-1037	Black	.19-.37	5-9	.25-.65	6-17	6,500	28,913	10	254	24	610	.220	6
08641716	033-27-1038	Dark Green	.38-.62	10-16	.50-.90	13-23	14,000	62,275	12	305	36	914	.375	10
08641728	033-27-1039	Red	.63-.87	16-22	.75-1.10	19-28	20,000	88,964	13	330	48	1,219	.437	11
08641734	033-27-1040	Dark Blue	.88-1.12	22-28	1.00-1.50	25-38	30,600	136,116	15	381	60	1,524	.500	13
08641740	033-27-1041	Yellow	1.13-1.37	29-35	1.25-1.70	32-43	46,800	208,177	18	457	76	1,930	.625	16
08641746	033-27-1042	Aluminum	1.38-1.90	35-48	1.50-2.10	38-53	66,500	295,807	24	610	89	2,261	.750	19

\*For rope, select smallest size grip which meets required work load.  
\*\* Dua-Pull is a registered trademark of Kellems.

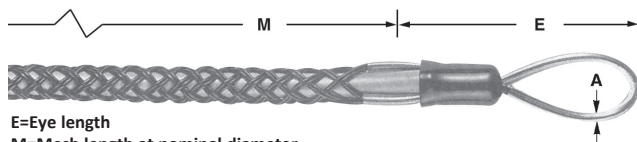
## Dua-Pull Feed Tube



The Feed Tube is used when assembling synthetic rope into the Dua-Pull Grip. It is required on the two largest sizes of Dua-Pull Grips. Feed Tubes are available for use on all sizes of Dua-Pull Grips.

Part Number	Description	For Use With Dua-Pull Grip	Rope Diameter		Feed Tube Length	
			(in)	(mm)	(in)	(mm)
08641610	091-06-1043	08641710	.25-.65	6-17	28	711
08641616	091-06-1044	08641716	.50-.90	13-23	40	1,016
08641628	091-06-1045	08641728	.75-1.10	19-28	52	1,321
08641634	091-06-1046	08641734	1.00-1.50	25-38	67	1,702
08641640	091-06-1047	08641740	1.25-1.70	32-43	83	2,108
08641646	091-06-1048	08641746	1.50-2.10	38-53	96	2,438

## Non-Conductive Grip



E=Eye length  
M=Mesh length at nominal diameter.

Non-Conductive Pulling Grips are made of a high strength, non-conductive aramid fiber, and are available for pulling single cable or cable bundles. Their braided double weave design adds strength and positive holding power. They were developed for use by utilities for pulling overhead distribution lines in close proximity to energized lines and hardware.

Part Number	Description	Color	Cable Diameter Range		Approximate Breaking Strength		E		M		Cable Dia. A	
			(in)	(mm)	(lbs)	(N)	(in)	(mm)	(in)	(mm)	(in)	(mm)
08642422	036-28-001	Green	.50-.62	13-16	1,000	4,448	5.5	140	24.0	610	.44	11
08642428	036-28-002	Yellow	.63-.74	16-19	2,000	8,896	5.5	140	26.0	660	.44	11
08642431	036-28-003	Red	.75-.99	19-25	2,000	8,896	6.0	152	31.0	787	.63	16
08642437	036-28-004	Blue	1.00-1.24	25-31	3,000	13,345	6.5	165	36.0	914	.63	16
08642443	036-28-005	White	1.25-1.49	32-38	3,000	13,345	6.7	170	41.5	1,054	.63	16



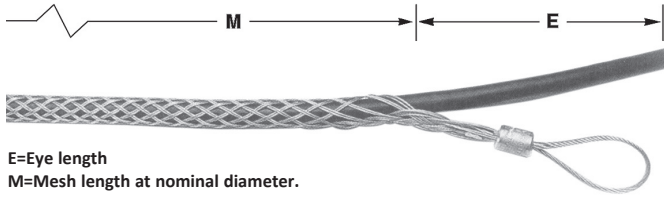
**CONDEX**

# PULLING GRIPS



PULLING EYES & ACCESSORIES

## Slack Grip - Closed Mesh

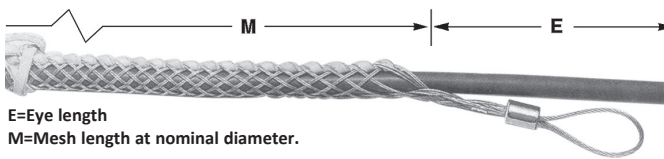


E=Eye length  
M=Mesh length at nominal diameter.

Slack Grip - Closed Mesh Pulling Grips are made of high strength galvanized steel in a double weave construction with a single eye. The closed mesh style grip is used when the cable end is accessible. All grips feature a single offset eye for easy attachment to a pulling line. They are used to pull in slack for final placement of underground cable after it has been pulled in. They are also used for removing cable.

Part Number	Description	Cable Diameter Range		Approximate Breaking Strength		E		M	
		(in)	(mm)	(lbs)	(N)	(in)	(mm)	(in)	(mm)
08642531	033-08-003	.75-.99	19-25	2,600	11,565	7	178	12	305
08642537	033-08-004	1.00-1.24	25-31	4,000	17,793	8	203	15	381
08642543	033-08-005	1.25-1.49	32-38	5,400	24,020	8	203	16	406
08642549	033-08-006	1.50-1.74	38-44	6,600	29,358	8	203	20	508
08642552	033-08-007	1.75-1.99	44-51	10,000	44,482	10	254	18	457
08642555	033-08-008	2.00-2.49	51-63	11,000	48,930	10	254	19	483
08642558	033-08-009	2.50-2.99	64-76	11,000	48,930	10	254	20	508
08642561	033-08-010	3.00-3.49	76-89	14,500	64,499	12	305	21	533
08642564	033-08-011	3.50-3.99	89-101	14,500	64,499	12	305	22	559

## Slack Grip - Split Mesh, Lace Closing

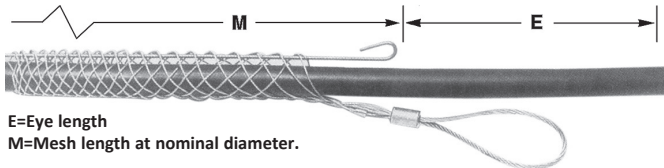


E=Eye length  
M=Mesh length at nominal diameter.

Slack Grip - Split Mesh, Lace Closing Pulling Grips are made of high strength galvanized steel in a double weave construction with a single eye. The split lace closing style grip is used when the cable end is not accessible. All grips feature a single offset eye for easy attachment to a pulling line. They are used to pull in slack for final placement of underground cable after it has been pulled in. They are also used for removing cable. Standard mesh lengths are generally used in restricted space for short pulls. Longer lengths are used for higher pulling loads where space is not restricted.

Part Number	Description	Cable Diameter Range		Approximate Breaking Strength		E		M	
		(in)	(mm)	(lbs)	(N)	(in)	(mm)	(in)	(mm)
08642731	033-09-003	.75-.99	19-25	2,500	11,121	7	178	12	305
08642737	033-09-004	1.00-1.24	25-31	3,500	15,569	8	203	15	381
08642743	033-09-005	1.25-1.49	32-38	4,000	17,793	8	203	16	406
08642749	033-09-006	1.50-1.74	38-44	4,000	17,793	9	229	17	432
08642752	033-09-007	1.75-1.99	44-51	4,000	17,793	10	254	18	457
08642755	033-09-008	2.00-2.49	51-63	4,000	17,793	10	254	19	483
08642758	033-09-009	2.50-2.99	64-76	4,000	17,793	10	254	20	508
08642849	033-09-015	1.50-1.99	38-51	4,000	17,793	9	229	25	635
08642855	033-09-016	2.00-2.49	51-63	4,000	17,793	10	254	26	660
08642858	033-09-017	2.50-2.99	64-76	4,000	17,793	10	254	29	737
08642861	033-09-018	3.00-3.49	76-89	4,000	17,793	12	305	32	813
08642864	033-09-019	3.50-3.99	89-101	4,000	17,793	12	305	35	889

## Slack Grip - Split Mesh, Rod Closing



E=Eye length  
M=Mesh length at nominal diameter.

Slack Grip - Split Mesh, Rod Closing Pulling Grips are made of high strength galvanized steel in a single weave construction with a single eye. The split rod closing style grip is used when the cable end is not accessible. All grips feature a single offset eye for easy attachment to a pulling line. They are used to pull in slack for final placement of underground cable after it has been pulled in. They are also used for removing cable.

Part Number	Description	Cable Diameter Range		Approximate Breaking Strength		E		M	
		(in)	(mm)	(lbs)	(N)	(in)	(mm)	(in)	(mm)
08642922	033-10-001	.50-.61	13-15	1,500	6,672	7	178	6	152
08642928	033-10-002	.62-.74	16-19	1,800	8,007	7	178	8	203
08642931	033-10-003	.75-.99	19-25	2,200	9,786	7	178	10	254
08642937	033-10-004	1.00-1.24	25-31	3,400	15,124	8	203	12	305
08642943	033-10-005	1.25-1.49	32-38	4,500	20,017	8	203	14	356
08642949	033-10-006	1.50-1.74	38-44	5,800	25,800	9	229	15	381
08642952	033-10-007	1.75-1.99	44-51	7,600	33,806	10	254	16	406
08642955	033-10-008	2.00-2.49	51-63	9,000	40,034	10	254	19	483
08642958	033-10-009	2.50-2.99	64-76	11,000	48,930	10	254	20	508
08642961	033-10-010	3.00-3.49	76-89	12,000	53,379	12	305	21	533
08642964	033-10-011	3.50-3.99	89-101	12,000	53,379	12	305	24	610







# PE & PVC PULLING EYES

## PE & PVC Pulling Eyes

The Condux PE & PVC Pulling Eyes feature three designs to suit your needs.

The non-sleeved design provides optimum gripping power, an extremely rigid center rod to prevent bending, and a steel tapered lead cone with the same O.D. as the conduit. The sleeved versions are water tight eyes that feature a multiple O-Ring configuration. These also have an extremely rigid center rod and sleeves designed to protect the outer leading edge of the conduit to form a water tight seal. Both the sleeved and non-sleeved designs feature split gripping segments with aggressive gripping threads, coupled with a steel expansion plug that grips the full range of conduit I.Ds.

Installation of the PE & PVC Pulling Eyes simply requires the leading eye to be tightened. The pulling eyes come standard with attachment eyes at both ends for connecting rope or steel lines. Pull-out strengths generally exceed the tensile capacity of the conduit.

NOTE: PE & PVC Pulling Eyes come with a 90 day limited warranty.

**See chart on page 56 for swivel compatibility. Replacement O-Rings on page 57.**



**Non Sleeved Pulling Eye**  
(page 54)



**Short Sleeved Pulling Eye**  
(page 55)



**Long Sleeved Pulling Eye**  
(page 55)

## PE & PVC Pulling Eyes Non-Sleeved Part Numbers

Part Number	Nominal Size (IN.)	Length		Conduit ID				Lead Cone OD		Duct Type	Nominal Duct ID	
		(IN.)	(MM)	Minimum (IN.)	Maximum (MM)	(IN.)	(MM)	(IN.)	(MM)		(IN.)	(MM)
08220220	1.5	8.33	211	1.51	38	1.80	46	2.375	60	1.5 SDR 11.0-17.0	1.53-1.66	39-42
										1.5 SCH 40	1.59	40
										1.5 SIDR	1.61	41
08220020	2	8.18	206	1.88	48	2.15	55	2.375	60	2.0 SDR 11.0-17.0	1.92-2.08	49-53
										2.0 SCH 80	1.91	49
										2.0 SCH 40	2.05	52
										2.0 SIDR	2.07	53
08220030	3	11.89	302	2.69	68	3.13	79	4.00	102	3.0 SDR 11.0-17.0	2.83-3.06	72-78
										3.0 SCH 80	2.83	72
										3.0 SCH 40	3.04	77
										3.0 SIDR	3.07	78
08220611	4	14.11	358	3.50	89	4.20	106	4.81	122	4.0 SDR 11.0-17.0	3.63-3.94	92-100
										4.0 SCH 80	3.79	96
										4.0 SCH 40	4.00	102
										4.0 SIDR	4.03	102
08220050	5	18.45	469	4.25	108	5.06	129	5.56	141	5.0 SDR 11.0-21.0	4.49-5.03	114-128
										5.0 SCH 80	4.77	121
										5.0 SCH 40	5.02	128
08220060	6	19.6	498	5.06	129	6.00	152	7.00	178	6.0 SDR 11.0-21.0	5.35-5.96	136-151
										6.0 SCH 80	5.71	145



# PE & PVC PULLING EYES



## PE & PVC Pulling Eyes: Short Sleeved and Long Sleeved Part Numbers

Short Sleeved Part Number	Long Sleeved Part Number	Nominal Size (IN.)	Length (IN.) (MM)		Conduit ID				Sleeve ID (IN.) (MM)		Duct Type	Nominal Duct ID	
					Minimum (IN.) (MM)		Maximum (IN.) (MM)					(IN.)	(MM)
08220612	08220620	1.0	6.23	158	1.00	25	1.25	32	1.415	36	1.0 SDR 11.0	1.06	27
											1.0 SDR 13.5	1.10	28
											1.25 SDR 11.0	1.33	34
											1.25 SCH 40	1.34	34
											1.25 SDR 13.5	1.39	35
08220600	08220621	1.25	6.23	158	1.25	32	1.50	38	1.76	48	1.25 SDR 15.5	1.43	36
											1.25 SDR 17.0	1.44	37
											1.25 SDR 21.0	1.50	38
											1.50 SDR 11.0	1.53	39
											1.50 SDR 13.5	1.60	41
08220601	08220622	1.5	6.23	158	1.50	38	1.75	44	2.01	51	1.50 SCH 40	1.59	40
											1.50 SDR 15.5	1.63	41
											1.50 SDR 17.0	1.66	42
											1.50 SDR 21.0	1.72	44
											2.0 SDR 11.0	1.92	49
08220602	08220623	2.0	8.18	208	1.88	48	2.15	55	2.45	62	2.0 SDR 13.5	2.00	51
											2.0 SDR 15.5	2.05	52
											2.0 SCH 40	2.05	52
											2.0 SDR 17.0	2.08	53
											2.0 SDR 21.0	2.15	55
08220609	08220624	2.5	8.80	224	2.31	59	2.56	65	3.01	76	2.5 SDR 11.0	2.32	59
											2.5 SDR 13.5	2.42	61
											2.5 SCH 40	2.45	62
											2.5 SDR 15.5	2.48	63
											2.5 SDR 17.0	2.52	64
08220603	08220625	3	11.89	302	2.69	68	3.13	79	3.63	92	3.0 SDR 11.0	2.83	72
											3.0 SDR 13.5	2.95	75
											3.0 SDR 15.5	3.02	77
											3.0 SDR 17.0	3.06	78
											3.0 SCH 40	3.04	77
08220604	08220626	4	14.11	358	3.50	89	4.06	103	4.63	118	4.0 SDR 11.0	3.63	92
											4.0 SDR 13.5	3.79	96
											4.0 SCH 80	3.79	96
											4.0 SDR 15.5	3.89	99
											4.0 SDR 17.0	3.94	100
08220605	08220627	5	18.45	469	4.25	108	5.06	129	5.63	143	4.0 SDR 21.0	4.05	103
											5.0 SDR 11.0	4.49	114
											5.0 SDR 13.5	4.69	119
											5.0 SDR 15.5	4.80	122
											5.0 SDR 17.0	4.87	124
08220606	08220628	6	19.60	498	5.06	129	6.00	152	6.76	172	5.0 SDR 21.0	5.00	127
											5.0 SCH 40	5.05	128
											6.0 SDR 11.0	5.35	136
											6.0 SDR 13.5	5.58	142
											6.0 SDR 15.5	5.72	145
08220608	08220629	8	21.53	547	6.63	168	7.69	195	8.84	224	6.0 SDR 17.0	5.80	147
											6.0 SDR 21.0	5.96	151
											8.0 SDR 11.0	6.96	177
											8.0 SDR 13.5	7.27	185
											8.0 SDR 15.5	7.45	189
08220613	08220630	8	21.53	547	7.63	194	8.25	209	8.84	224	Bore-Gard	7.981	203
											Heavy Wall SCH 40	7.981	203

PULLING EYES & ACCESSORIES





# PE & PVC PULLING EYES



## D. Drill Swivels & PE & PVC Pulling Eye Compatibility Chart

Swivel Part Number	Swivel Size		Compatible PE/PVC Eye Size (in)
	(in)	(mm)	
08190016	1-5/8	41	1.0 - 3.0
08190020	2	51	1.0 - 3.0
08190025	2-1/2	64	2.0 - 6.0
08190030	3	76	4.0 - 6.0
08190408	7/8	22	1.0 - 1.5
08190412	1-1/4	32	1.0 - 3.0
08190416	1-5/8	41	1.0 - 3.0
08190421	2	51	1.0 - 3.0
08190426	2-1/2	64	2.0 - 8.0
08190431	3	76	4.0 - 8.0





**CONDEX**

# PE & PVC PULLING EYES



## Replacement O-Ring Part Numbers

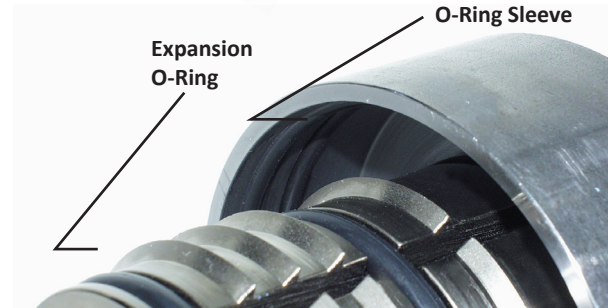
### PE & PVC Pulling Eyes Non-Sleeved O-Rings

Pulling Eye Part Number	Expansion O-Ring Part Number	Quantity Per Eye
08220220	08010414	2
08220030	02269624	3
08220611	02269621	3
08220050	02269626	6
08220060	02269622	6



### PE & PVC Pulling Eyes Short and Long Sleeved O-Rings

Pulling Eye Part Number	Expansion O-Ring Part Number	Quantity Per Eye	O-Rings in Sleeve Part Number	Quantity Per Eye
08220612 08220620	02288918	2	02289886	2
08220600 08220621	02269636	2	02288994	2
08220601 08220622	08010414	2	02288920	2
08220602 08220623	02269625	2	02288921	2
08220609 08220624	02269633	3	02288993	2
08220603 08220625	02269624	3	02288922	2
08220604 08220626	02269621	3	02288888	2
08220605 08220627	02269626	6	02288927	2
08220606 08220628	02269622	6	02288890	2
08220608 08220629	02269631	6	02288923	2
08220613 08220630	02269631	6	02288923	2



PULLING EYES & ACCESSORIES







# INNERDUCT PULLING PRODUCTS



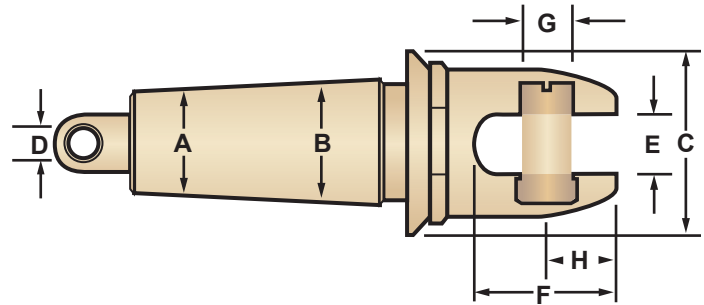
## Swivel Head Innerduct Pulling Eye

The Innerduct Pulling Eye is a hybrid tool that combines features from standard innerduct pulling eyes and Condux swivels. A swivel head prevents twisting and binding of the innerduct as it is installed. It eliminates the need for a separate swivel on each pulling eye when installing single innerducts into individual conduits or multiple innerducts into a single conduit. Its short length is an advantage on tight bends compared to using a separate swivel and pulling eye. Easily installed using a 1<sup>3</sup>/<sub>8</sub>" deep socket or adjustable wrench.

**NOTE:** To determine correct pulling eye size, obtain the actual innerduct inside diameter (I.D.). The I.D. measurement must be greater than dimension A and smaller than dimension B.

## Replacement Clevis Pins for Swivel Head Innerduct Pulling Eyes

Part Number	Replacement Part Number
08960712	08081036
08960715	08081036
08960720	08081036



**!** See compatibility chart on page 61 to determine what Innerduct Pulling Eyes work with various standard innerduct sizes.

Part Number	Nominal Size	Innerduct ID Range		Max OD C		Hole Diameter D		Slot Width E		Slot Depth F		Pin Diameter G		Pin Center H	
	(IN.)	A - B (IN.)	A - B (MM)	(IN.)	MM	(IN.)	MM	(IN.)	(MM)	(IN.)	(MM)	(IN.)	(MM)	(IN.)	(MM)
08960712	1 - 1.25	1.06 - 1.43	27 - 37	1.75	44	.44	11	.56	14	1.31	33	.43	11	.56	14
08960715	1.50	1.37 - 1.68	35 - 43	2.00	51	.44	11	.56	14	1.31	33	.43	11	.56	14
08960720	2.00	1.93 - 2.12	49 - 54	2.44	62	.44	11	.56	14	1.31	33	.43	11	.56	14

All Swivel Head Innerduct Pulling Eyes are compatible with all Condux pulling harness legs.



CONDEX

# INNERDUCT PULLING PRODUCTS



## Clevis Head Innerduct Pulling Eye

With the same tapered threads as the fixed head innerduct pulling eyes, these pulling eyes feature a slotted head with clevis pin to permit direct attachment to any Condux multiple pulling harness leg ends. When properly sized and installed, these eyes will not pull out of the innerduct until the pulling tensions have greatly exceeded the maximum pulling tensions recommended by the innerduct manufacturers.

**NOTE:** To determine correct pulling eye size, obtain the actual innerduct inside diameter (I.D.). The I.D. measurement must be greater than dimension A and smaller than dimension B.

## Replacement Clevis Pins for Clevis Head Innerduct Pulling Eyes

Part Number	Replacement Part Number
08914310	08081046
08914320	08081036
08914330	08210135
08914340	08081016
08914350	08081016
08914360	08081006



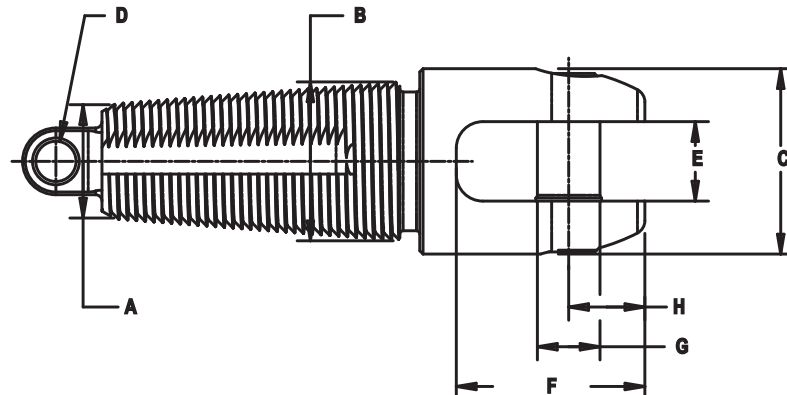
See compatibility chart on page 61 to determine what Innerduct Pulling Eyes work with various standard innerduct sizes.



PULLING EYES & ACCESSORIES

Part Number	Nominal Size	Innerduct ID Range		Max OD C		Hole Diameter D		Slot Width E		Slot Depth F		Pin Diameter G		Pin Center H	
	(IN.)	A - B (IN.)	A - B (MM)	(IN.)	MM	(IN.)	MM	(IN.)	(MM)	(IN.)	(MM)	(IN.)	(MM)	(IN.)	(MM)
08914310	0.75	.73 - .94	19 - 24	1.25	32	.25	6	.56	14	1.34	34	.37	9	.59	15
08914320	1.00	.93 - 1.06	24 - 27	1.38	35	.25	6	.56	14	1.34	34	.43	11	.56	14
08914330	1.25	1.16 - 1.43	29 - 36	1.75	44	.38	10	.75	19	1.78	45	.62	16	.81	21
08914340	1.50	1.58 - 1.75	40 - 44	2.00	51	.38	10	.75	19	1.78	45	.62	16	.72	18
08914350	1.75	1.72 - 1.85	44 - 47	2.25	57	.38	10	.75	19	1.78	45	.62	16	.72	18
08914360	2.00	1.97 - 2.12	50 - 54	2.50	64	.38	10	.75	19	2.50	64	.87	22	1.23	31

All Clevis Head Innerduct Pulling Eyes are compatible with all Condux pulling harness legs.





# INNERDUCT PULLING PRODUCTS

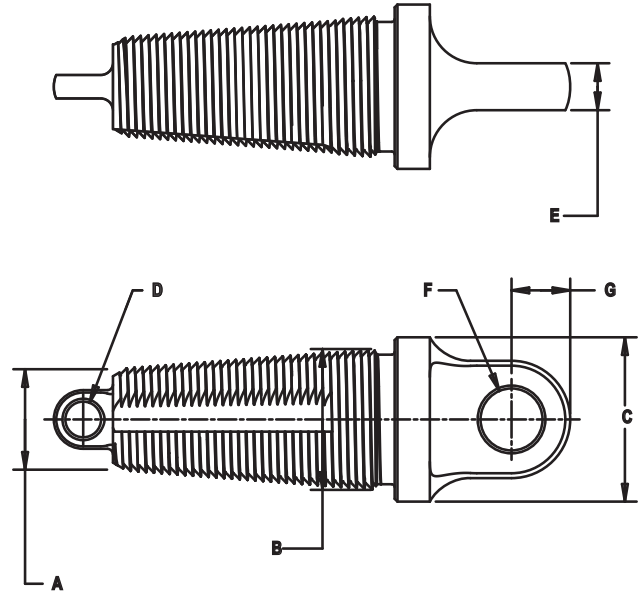


**!** See compatibility chart on page 61 to determine what Innerduct Pulling Eyes work with various standard innerduct sizes.

## Fixed Head Innerduct Pulling Eye

Tapered buttress threads thread into the innerduct for maximum pulling strength. These eyes connect directly to a Condux swivel (see page 34). When properly sized and installed, these eyes will not pull out of the innerduct until the pulling tensions have greatly exceeded the maximum pulling tensions recommended by the innerduct manufacturers.

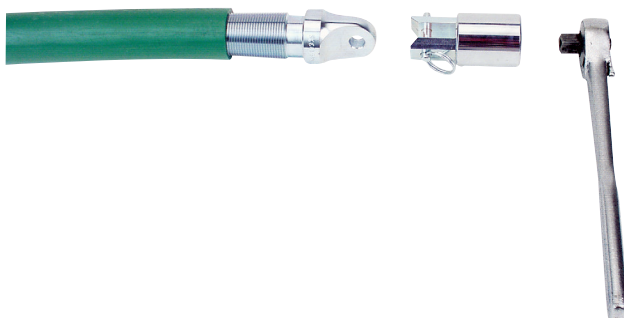
**NOTE:** To determine correct pulling eye size, obtain the actual innerduct inside diameter (I.D.). The I.D. measurement must be greater than dimension A and smaller than dimension B.



Part Number	Nominal Size	Innerduct ID Range		Max OD C		Hole Diameter D		Tang Thickness E		Tang Hole Diameter F		Tang Hole Location G	
	(IN.)	A - B (IN.)	A - B (MM)	(IN.)	MM	(IN.)	MM	(IN.)	(MM)	(IN.)	(MM)	(IN.)	(MM)
08914110 *	0.75	.73 - .94	19 - 24	1.25	32	.25	6	.38	10	.50	13	.50	13
08914120 *	1.00	.93 - 1.06	24 - 27	1.38	35	.25	6	.38	10	.50	13	.50	13
08914130 *	1.25	1.16 - 1.43	29 - 36	1.75	44	.38	10	.50	13	.66	17	.63	16
08914140 *	1.50	1.58 - 1.75	40 - 44	2.00	51	.38	10	.50	13	.66	17	.63	16
08914150 **	1.75	1.72 - 1.85	44 - 47	2.25	57	.38	10	.50	13	.66	17	.75	19
08914160 **	2.00	1.97 - 2.12	50 - 54	2.50	64	.38	10	.50	13	.81	21	.75	19

\* Compatible with 1/4"-3/8" Threaded Chain Connectors and Condux Swivels 08080912, 08080913, 08210012, and 08210014

\*\* Compatible with 5/16"-1/2" Threaded Chain Connectors and Condux Swivels 08210012 and 08210014



## Innerduct Pulling Eye Installation Tool

Fits on a 1/2" drive ratchet (not included) to facilitate insertion of the eye into the innerduct.

Part Number	Description
08913335	Installation Tool



# INNERDUCT PULLING PRODUCTS



## Innerduct Compatibility Chart

Use the chart to determine which Innerduct Pulling Eyes work with the different sizes of innerduct.

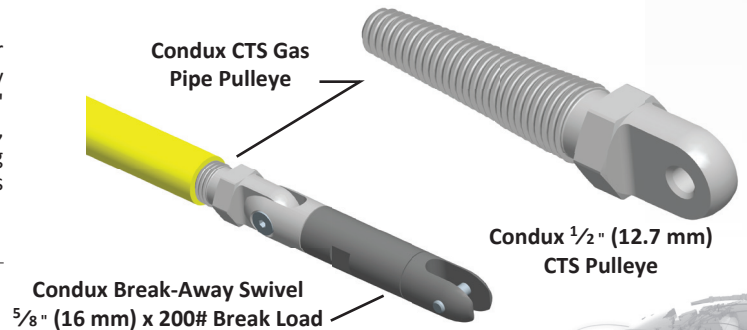
	Innerduct Eye Part No.	Innerduct I.D. Range	Compatible Innerduct					
			0.75"	1.00"	1.25"	1.50"	2.00"	
Swivel Head	08960712	1.06"-1.43" (27 mm-36 mm)	-	SDR 13.5 SDR 15.5 SDR 17 SDR 21	SDR 7 SDR 9 SDR 11 SDR 13.5	SDR 7	-	
	08960715	1.37"-1.68" (35 mm-42 mm)	-	-	SDR 13.5 SDR 15.5 SDR 17 SDR 21	SDR 9 SDR 11 SDR 13.5 SDR 15.5	-	
	08960720	1.93"-2.12" (49 mm-54 mm)	-	-	-	-	SDR 13.5 SDR 15.5 SDR 17	
Fixed Head	Clevis Head	08914110	08914310	.73"-.94" (19 mm-24 mm)	SDR 9 SDR 11 SDR 13.5 SDR 15.5	-	-	-
		08914120	08914320	.93"-1.06" (24 mm-27 mm)	-	SDR 7 SDR 9 SDR 11	-	-
		08914130	08914330	1.16"-1.43" (29 mm-36 mm)	-	SDR 21	SDR 7 SDR 9 SDR 11 SDR 13.5	-
		08914140	08914340	1.58"-1.75" (40 mm-44 mm)	-	-	SDR 21	SDR 13.5 SDR 15.5 SDR 17 SDR 21
		08914150	08914350	1.72"-1.85" (44 mm-47 mm)	-	-	-	SDR 21
		08914160	08914360	1.97"-2.12" (50 mm-54 mm)	-	-	-	-

PULLING EYES & ACCESSORIES

## CTS Gas Pipe Pulleys

Tapered buttress threads thread into the gas pipe for maximum pulling strength. These eyes connect directly to a Condux Breakaway Swivel (compatible with Condux 5/8" Breakaway Swivel only). When properly sized and installed, these eyes will not pull out of the gas pipe until the pulling tensions have greatly exceeded the maximum pulling tensions recommended by the gas pipe manufacturers.

Part Number	Description	Dimension
08914005	1/2 Inch CTS Gas Pipe Pulley	.315"-.551" (8 mm-14 mm)
08914007	3/4 Inch CTS Gas Pipe Pulley	.551"-.813" (14 mm-21 mm)
08914010	1 Inch CTS Gas Pipe Pulley	.813"-.1.05" (21 mm-27 mm)



## Innerduct Eyes for Micro Duct

Tapered buttress threads into the micro duct for maximum pulling strength.

Part Number	Description
08913547	Innerduct Eyes for Micro Duct (5-9 mm ID)
08913545	Innerduct Eyes for Micro Duct (10-13 mm ID)
08913538	Innerduct Eyes for Micro Duct (13-15 mm ID)







# PULLING EYE SYSTEMS

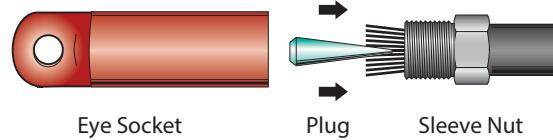


## Reusable Power Cable Pulling Eyes

Condux non-crimp Reusable Cable Pulling Eyes waste virtually no cable and all components are completely reusable. These eyes will remain firmly secured on the cable for a confident pull. No special tools or crimpers are required for installation.

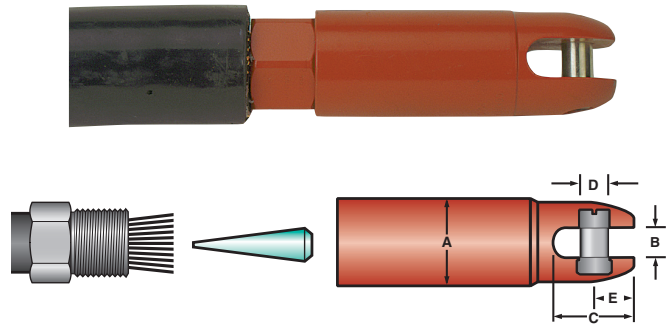
Three designs of Reusable Power Pulling Eyes are available: Clevis Head, Standard Head, and Swivel Head.

For ease of ordering and cost savings, kits are available for Clevis, Swivel and Standard Head Reusable Eyes. See pages 62 - 64 for information.



## Reusable Power Pulling Eyes, Clevis Head

The Clevis Head Power Pulling Eyes feature a slotted head with clevis pin to allow direct attachment to a Condux multiple pulling harness. When pulling multiple cables into a single conduit, the conductors can be attached to a harness and installation is simplified to a single pull of one assembly. Each Clevis Head Power Pulling Eye includes a clevis socket, sleeve nut, and plug.



Part Number	Cable Size	Color	Maximum Conductor Diameter		Max Eye OD A		Slot Width B		Slot Depth C		Pin Diameter D		Pin Center E		Replacement Plug Part Number	Load Rating	
			(IN.)	(MM)	(IN.)	(MM)	(IN.)	(MM)	(IN.)	(MM)	(IN.)	(MM)	(IN.)	(MM)		LBS	KG
08918150*	2500 kcmil	Green	1.824	46	3.00	76	1.00	25	2.80	71	.88	22	1.23	31	08918123	25000	11340
08918050*	2000 kcmil	Red	1.601	41	2.50	64	1.00	25	2.80	71	.88	22	1.23	31	08918023	25000	11340
08917750*	1750 kcmil	Yellow	1.526	39	2.50	64	1.00	25	2.80	71	.88	22	1.23	31	08917723	25000	11340
08917950*	1500 kcmil	Black	1.412	36	2.38	60	.75	19	1.78	45	.63	16	.72	18	08917923	15000	6804
08917850*	1250 kcmil	Blue	1.289	33	2.25	57	.75	19	1.78	45	.63	16	.72	18	08917823	15000	6804
08917150*	1000 kcmil	Orange	1.152	29	2.06	52	.75	19	1.78	45	.63	16	.72	18	08917123	15000	6804
08917250*	750 kcmil	Brown	.998	25	1.75	44	.63	16	1.59	40	.56	14	.78	20	08917223	10000	4536
08917350*	700 kcmil	Gray	.964	24	1.75	44	.63	16	1.59	40	.56	14	.78	20	08917323	10000	4536
08918250*	600 kcmil	Green	.937	24	1.75	44	.63	16	1.59	40	.56	14	.78	20	08918223	10000	4536
08917450*	500 kcmil	Yellow	.813	21	1.44	37	.59	15	1.41	36	.44	11	.59	15	08917423	7000	3175
08918350*	400 kcmil	Black	.713	18	1.44	37	.59	15	1.41	36	.44	11	.59	15	08918323	5000	2268
08917550*	350 kcmil	White	.681	17	1.25	32	.56	14	1.34	34	.38	10	.59	15	08917523	2500	1134
08960350**	250 kcmil	Blue	.575	15	1.13	29	.38	10	1.06	27	.31	8	.53	13	08960323	2500	1134
08960450**	4/0 AWG	Green	.528	13	1.00	25	.38	10	1.06	27	.31	8	.53	13	08960423	2500	1134
08960950**	3/0 AWG	Orange	.475	12	1.00	25	.38	10	1.06	27	.31	8	.53	13	08960923	2500	1134
08960850**	2/0 AWG	Black	.419	11	1.00	25	.38	10	1.06	27	.31	8	.53	13	08960823	2500	1134
08960550**	1/0 AWG	Red	.373	9	0.88	22	.38	10	1.06	27	.31	8	.53	13	08960523	2500	1134

\* - Compatible with all Condux pulling harness legs.

\*\* - Compatible with 3/8" (3 mm) and 1/4" (6 mm) Condux pulling harness legs.

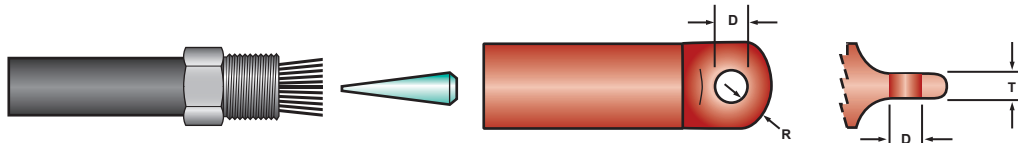
**Will not work on flat aluminum stranded conductor.**



## Reusable Power Pulling Eyes, Standard Head

The Standard Head Power Pulling Eyes are an excellent alternative when pulling multiple cables into a single conduit. Single conductors can be attached to a Condux Multiple Pulling Harness with links or with Condux swivels. Installation is then simplified to a single pull of one assembly. Each Standard Power Pulling Eye includes an eye socket, sleeve nut, and plug.

For swivel compatibility, refer to compatibility chart on page 37.



Part Number	Cable Size	Color	Maximum Conductor Diameter		Max Eye OD		Hole Diameter D		Eye Thickness T		Eye Width R		Replacement Plug Part Number	Working Load	
			(IN.)	(MM)	(IN.)	(MM)	(IN.)	(MM)	(IN.)	(MM)	(IN.)	(MM)		LBS	KN
08918455	6000 kcmil	Orange	2.785	71	4.50	114	1.31	33	1.50	38	1.22	31	08918423	59,000	262.4
08918440	5000 kcmil	White	2.500	64	4.50	114	1.31	33	1.50	38	1.22	31	08918423	59,000	262.4
08918450	4000 kcmil	Yellow	2.220	56	4.00	102	1.25	32	1.50	38	1.25	32	08918423	42,500	189.0
08918445	3500 kcmil	Black	2.160	55	4.00	102	1.25	32	1.50	38	1.25	32	08918423	42,500	189.0
08918430	3000 kcmil	Gray	2.030	52	4.00	102	0.88	22	.94	24	.81	21	08918423	26,000	115.6
08918585	2750 kcmil	White	1.964	50	4.00	102	0.88	22	.94	24	.81	21	08918423	26,000	115.6
08918580	2500 kcmil	Green	1.923	49	4.00	102	0.88	22	.94	24	.81	21	08918123	26,000	115.6
08918575	2000 kcmil	Red	1.700	43	2.63	67	1.00	25	.88	22	.75	19	08918023	25,000	111.2
08918570	1750 kcmil	Yellow	1.625	41	2.63	67	1.00	25	.88	22	.75	19	08917723	25,000	111.2
08918565	1500 kcmil	Black	1.469	37	2.63	67	1.00	25	.88	22	.75	19	08917923	25,000	111.2
08918560	1250 kcmil	Blue	1.328	34	2.63	67	1.00	25	.88	22	.75	19	08917823	25,000	111.2
08918555	1000 kcmil	Orange	1.203	31	2.00	51	0.69	17	.63	16	.59	15	08917123	13,500	60.0
08918550	750 kcmil	Brown	1.031	26	2.00	51	0.69	17	.63	16	.59	15	08917223	13,500	60.0
08918545	700 kcmil	Gray	1.00	25	2.00	51	0.69	17	.63	16	.59	15	08917323	13,500	60.0
08918540	600 kcmil	Green	.906	23	2.00	51	0.69	17	.63	16	.59	15	08918223	13,500	60.0
08918535	500 kcmil	Yellow	.843	21	1.88	48	0.69	17	.50	13	.59	15	08917423	8,500	37.8
08918530	400 kcmil	Black	.750	19	1.88	48	0.69	17	.50	13	.59	15	08918323	8,500	37.8
08918525	350 kcmil	White	.718	18	1.88	48	0.69	17	.50	13	.59	15	08917523	8,500	37.8
08918520	250 kcmil	Blue	.640	16	1.25	32	0.50	13	.50	13	.38	10	08960323	6,500	28.9
08918515	4/0 AWG	Green	.531	13	1.25	32	0.50	13	.50	13	.38	10	08960423	6,500	28.9
08918510	3/0 AWG	Orange	.475	12	1.25	32	0.50	13	.50	13	.38	10	08960923	6,500	28.9
08918505	2/0 AWG	Black	.431	11	1.25	32	0.50	13	.50	13	.38	10	08960823	6,500	28.9
08918500	1/0 AWG	Red	.390	10	1.25	32	0.50	13	.50	13	.38	10	08960523	6,500	28.9

3:1 Safety Factor

**!** Will not work on flat aluminum stranded conductor.

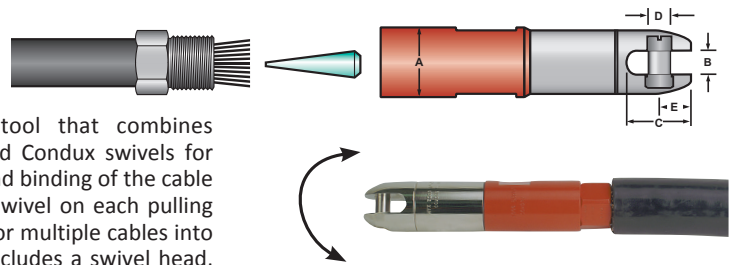




# PULLING EYE SYSTEMS

## Reusable Power Pulling Eyes, Swivel Head

The Swivel Head Power Pulling Eye is a hybrid tool that combines features from standard reusable power pulling eyes and Condux swivels for superior performance. A swivel head prevents twisting and binding of the cable as it is installed. It eliminates the need for a separate swivel on each pulling eye when installing single cables into individual conduits or multiple cables into a single conduit. Each Swivel Head Power Pulling Eye includes a swivel head, sleeve nut, and plug.



Part Number	Cable Size	Color	Maximum Conductor Diameter		Max Eye OD A		Slot Width B		Slot Depth C		Pin Diameter D		Pin Center E		Replacement Plug Part Number	Load Rating	
			(IN.)	(MM)	(IN.)	(MM)	(IN.)	(MM)	(IN.)	(MM)	(IN.)	(MM)	(IN.)	(MM)		LBS	KG
08918175*	2500 kcmil	Green	1.824	46	3.00	76	1.00	25	2.80	71	.88	22	1.23	31	08918123	25000	11340
08918075*	2000 kcmil	Red	1.601	41	2.50	64	1.00	25	2.80	71	.88	22	1.23	31	08918023	25000	11340
08917775*	1750 kcmil	Yellow	1.526	39	2.50	64	1.00	25	2.80	71	.88	22	1.23	31	08917723	25000	11340
08917975*	1500 kcmil	Black	1.412	36	2.38	60	.75	19	1.78	45	.63	16	.72	18	08917923	15000	6804
08917875*	1250 kcmil	Blue	1.289	33	2.25	57	.75	19	1.78	45	.63	16	.72	18	08917823	15000	6804
08917175*	1000 kcmil	Orange	1.152	29	2.06	52	.75	19	1.78	45	.63	16	.72	18	08917123	15000	6804
08917275*	750 kcmil	Brown	.998	25	1.75	44	.63	16	1.59	40	.56	14	.78	20	08917223	10000	4536
08917375*	700 kcmil	Gray	.964	24	1.75	44	.63	16	1.59	40	.56	14	.78	20	08917323	10000	4536
08918275*	600 kcmil	Green	.9367	24	1.75	44	.63	16	1.59	40	.56	14	.78	19	08918223	10000	4536
08917475*	500 kcmil	Yellow	.813	21	1.44	37	.56	14	1.31	33	.44	11	.56	14	08917423	10000	4536
08918375*	400 kcmil	Black	.7125	18	1.44	37	.56	14	1.31	33	.44	11	.56	14	08918323	7000	3175
08917575*	350 kcmil	White	.681	17	1.25	32	.56	14	1.34	34	.38	10	.59	15	08917523	5000	2268
08960375**	250 kcmil	Blue	.575	15	1.13	29	.38	10	1.03	26	.31	8	.53	13	08960323	2500	1134
08960475**	4/0 AWG	Green	.528	13	1.00	25	.38	10	1.03	26	.31	8	.53	13	08960423	2500	1134
08960975**	3/0 AWG	Orange	.475	12	1.00	25	.38	10	1.03	26	.31	8	.53	13	08960923	2500	1134
08960875**	2/0 AWG	Black	.419	11	1.00	25	.38	10	1.03	26	.31	8	.53	13	08960823	2500	1134
08960575**	1/0 AWG	Red	.373	10	.88	22	.38	10	1.03	26	.31	8	.53	13	08960523	2500	1134

\* - Compatible with all Condux pulling harness legs.

\*\* - Compatible with 3/8" (3 mm) and 1/2" (6 mm) Condux pulling harness legs.

**Will not work on flat aluminum stranded conductor.**

## Reusable Power Pulling Eye Kits

For cost savings and ease of ordering, Condux has prepared kits for the Clevis, Standard, and Swivel Head Reusable Power Pulling Eyes.



## Clevis Head Kits

Part Number	Description
08917010	Kit for 350 to 1000 kcmil power pulling eyes with clevis ends. Includes 3 each of the eyes for 350 to 1000 kcmil cable. <b>NOTE:</b> Does not include 400 or 600kcmil.
08917060	Kit for 1/0 AWG to 250 kcmil power pulling eyes with clevis ends. Includes three each of the eyes for 1/0 AWG to 250 kcmil cable. <b>NOTE:</b> Does not include 3/0 AWG.

## Standard Head Kits

Part Number	Description
08918595	Kit for 350 to 1000 kcmil power pulling eyes with eye ends. Includes three each of the eyes for 350 to 1000 kcmil cable. <b>NOTE:</b> Does not include 400 or 600kcmil.
08918590	Kit for 1/0 AWG to 250 kcmil power pulling eyes with eye ends. Includes three each of the eyes for 1/0 AWG to 250 kcmil cable. <b>NOTE:</b> Does not include 3/0 AWG.

## Swivel Head Kits

Part Number	Description
08917030	Kit for 350 to 1000 kcmil power pulling eyes with swivel ends. Includes three each of the eyes for 350 to 1000 kcmil cable. <b>NOTE:</b> Does not include 400 or 600kcmil.
08917080	Kit for 1/0 AWG to 250 kcmil power pulling eyes with swivel ends. Includes three each of the eyes for 1/0 AWG to 250 kcmil cable. <b>NOTE:</b> Does not include 3/0 AWG.

## Replacement Case

Part Number	Description
08917086	Replacement case is available for the Reusable Power Pulling Eyes. This case includes a foam insert for the storage of the power pulling eyes.



# CABLE PULLING LUBRICANT



## Crimp-On Cable Pulling Eyes and Accessories

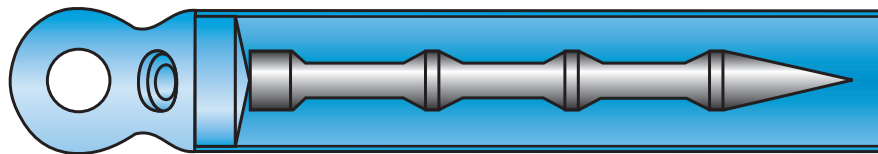
**!** Visit [www.condux.com](http://www.condux.com) for product literature.

Condux Crimp-On Cable Pulling Eyes for telephone and power cable are the ultimate solution in cable pulling eyes. These pulling eyes form a connection as strong as the cable itself. The entire cable, jacket and conductor is used which reduces the risk of cable deformation during pulling. When properly installed, Crimp-On Pulling Eyes are virtually impossible to pull off and also seal the cable against both water and air intrusion. Typically factory installed, the pulling eyes can also be field installed with a special crimping tool, available from Condux.

The Condux Crimp-On Cable Pulling Eyes Catalog, available online at [www.condux.com](http://www.condux.com), lists complete information on different styles of pulling eyes available and serves as an ordering guide. Minimum order quantities apply.



Crimp-on Pulling Eye Crimper Kit and Accessories



## Polywater® Lubricant J

Polywater® Lubricant J is a high performance, clean, slow-drying, water-based gel. Lubricant J provides maximum tension reduction in all types of cable pulling. It is especially recommended for long pulls, multiple-bend pulls and pulls in hot environments. Lubricant J dries to form a thin lubricating film that retains its slipperiness for months after use. It is harmless to humans, environmentally safe, compatible with all cable jacket materials and easily applied.

Part Number	Description	Min. Order Qty.
08230300	1 Quart (.9 liter) Squeeze Bottle	12 Quarts
08230310	1/2 Gallon (1.9 liter) Poly Bag (in Pail)	10 Bags (in 1 Pail)
08230301	1 Gallon (3.8 liter) Pail	4 Pails
08230305	5 Gallon (19 liter) Pourable Pail	1 Pail
08230355	55 Gallon (208 liter) Drum	1 Drum



## Polywater® Lubricant WJ

Lubricant WJ is a non-freezing form of the standard Lubricant J for power applications.

Part Number	Description	Min. Order Qty.
08230400	1 Quart (.9 liter) Squeeze Bottle	12 Quarts
08230410	1/2 Gallon (1.9 liter) Poly Bag (in Pail)	10 Bags (in 1 pail)
08230401	1 Gallon (3.8 liter) Jug	4 Jugs
08230405	5 Gallon (19 liter) Pourable Pail	1 Pail
08230455	55 Gallon (208 liter) Drum	1 Drum

## Polywater® Lubricant PJ

Polywater® Lubricant PJ is a pourable version of the Polywater® Lubricant J. It offers the same proven features as Polywater® Lubricant J in key areas such as lubricity, cable compatibility and easy clean-up, yet is easier to apply where pouring is practical.

Part Number	Description	Min. Order Qty.
08230501	1 Gallon (3.8 liter) Jug	4 Jugs
08230504	2 1/2 Gallon (9.5 liter) Jug	2 Jugs
08230505	5 Gallon (19 liter) Pourable Pail	1 Pail
08230555	55 Gallon (208 liter) Drum	1 Drum



PULLING EYES & ACCESSORIES